

Mooring equipment is a kind of fittings and mechanisms that are used to warp and to secure the ship when it is moored at a dock, at the wall of a lock, to buoys, or alongside another vessel. The main equipment include anchors, anchor chains, mooring ropes, towing brackets, bollards, chocks and etc. Most of mooring equipment we supply can be approved by ABS, BV, CCS, DNV GL, LR, NK, KR and RINA.

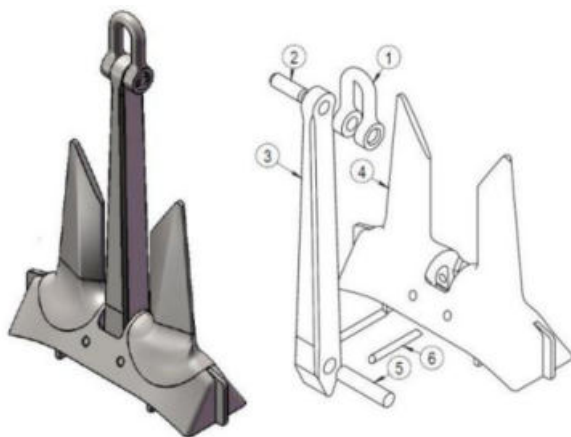
Anchors

Anchors are mainly used to fix and secure vessels. It can be divided into stock anchor and stockless anchor by shape, also can be divided into HHP anchor and common holding power anchor according to holding power. Currently, vessels are equipped with stockless anchors in most instances, the most popular ones are JIS stockless anchor and AC-14 HHP anchor. The former is a common holding power anchor and the latter is a high holding power anchor.

Material: cast steel, low alloy steel, stainless steel

Weight: 0.5kg~28000kgs

Surface: galvanization / bitumen painting



AC-14 HHP Anchor

1. Shackle
2. Shackle Pin
3. Shank
4. Head
5. Head pin
6. Pin



Pool Anchor
40~46000kgs



Spek Anchor
80~20000kgs



JIS Stockless Anchor
180~46000kgs



AC-14 HHP Anchor
56~100000kgs



Delta Anchor
300~100000kgs



De Hone Anchor
200~15500kgs



LWT Anchor
14~20000kgs



Danforth Anchor
60~25000kgs



Matrosove Anchor
25~1500kgs



USN Stockless Anchor
12~28875kgs



Four-Fluke Anchor
100~60000kgs



Stevin Anchor
1000~30000kgs



Stingray Anchor
customized



Japan Stock Anchor
500~8000kgs



Bruce Anchor
2~50kgs



Plow Anchor
1~20kgs



Five-Claw Anchor
0.5~20kgs



Four-Claw Anchor
1~20kgs



Folding Anchor
2~50kgs



Mushroom Anchor
2~100kgs

Anchors in Warehouse



Anchor Chain

Application: used to connect ship body and anchor

Material: chain cable steel

Type: stud link chain/studless link chain

Grade: U2/U3

Dia. Range: 12.5mm~225mm

Length: 27.5m or customized

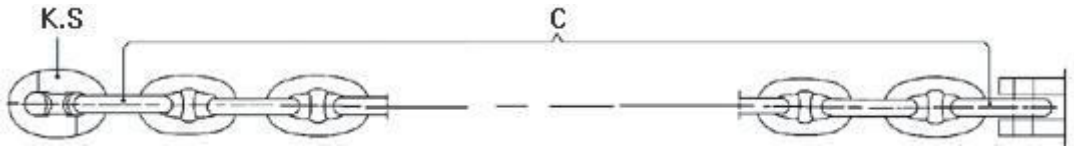
Process: flush butt welding

Surface: galvanization / bitumen painting

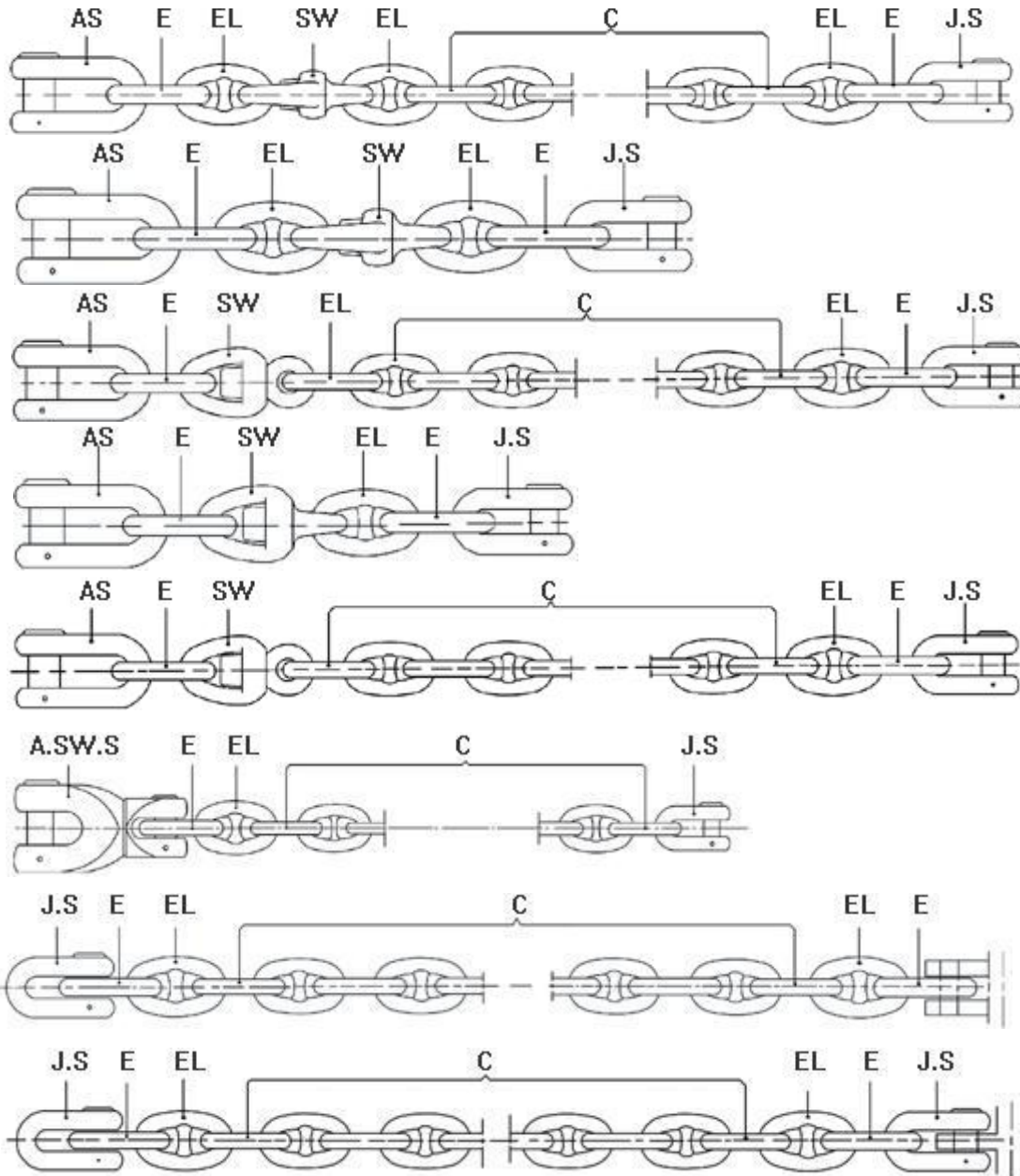


Drawings of Products

<p>Stud Common Link (C)</p>	<p>Enlarged Link (EL)</p>	<p>End Link (E)</p>
<p>Studless Link (SL) for mooring chain</p>	<p>Kenter Shackle (KS)</p>	<p>Joining Shackle (JS)</p>
<p>Anchor Shackle (AS)</p>	<p>Swivel (SW)</p>	<p>Swivel Shackle (Type A) (A.SW.S(a))</p>
<p>Swivel Shackle (Type B) (A.SW.S(b))</p>	<p>Buoy Shackle Type A (BS)</p>	<p>Buoy Shackle Type B (BS)</p>



A. Joining Form for "D" Joining Shackle



Test Load of Anchor Chains and Fittings

Nominal Chain Diameter (mm)	Proof Test Load (KN)		Breaking Test Load(KN)		Approx. Mass (kg/ 27.5m)
	AM ₂ Grade 2	AM ₃ Grade 3	AM ₂ Grade 2	AM ₃ Grade 3	
12.5	66	92	92	132	98
14	82	116	116	165	122
16	107	150	150	216	161
17.5	127	179	179	256	193
19	150	211	211	301	227
20.5	175	244	244	349	264
22	200	280	280	401	305
24	237	332	332	476	362
26	278	389	389	556	425
28	321	449	449	642	493
30	368	514	514	735	566
32	417	583	583	833	644
34	468	655	655	937	727
36	523	732	732	1050	815
38	581	812	812	1160	909
40	640	896	896	1280	1007
42	703	981	981	1400	1110
44	769	1080	1080	1540	1218
46	837	1170	1170	1680	1331
48	908	1270	1270	1810	1450
50	981	1370	1370	1960	1573
52	1060	1480	1480	2110	1701
54	1140	1590	1590	2270	1835
56	1220	1710	1710	2430	1973
58	1290	1810	1810	2600	2117
60	1380	1940	1940	2770	2265
62	1470	2060	2060	2940	2419
64	1560	2190	2190	3130	2577
66	1660	2310	2310	3300	2741
68	1750	2450	2450	3500	2909
70	1840	2580	2580	3690	3080
73	1990	2790	2790	3990	3353
76	2150	3010	3010	4300	3634
78	2260	3160	3160	4500	3828
81	2410	3380	3380	4820	4128
84	2580	3610	3610	5160	4440
87	2750	3850	3850	5500	4762
90	2920	4090	4090	5840	5097
92	3040	4260	4260	6080	5326
95	3230	4510	4510	6440	5679
97	3340	4680	4680	6690	5920

100	3530	4940	4940	7060	6292
102	3660	5120	5120	7320	6546
105	3850	5390	5390	7700	6937
107	3980	5570	5570	7960	7204
111	4250	5940	5940	8480	7752
114	4440	6230	6230	8890	8177
117	4650	6510	6510	9300	8613
120	4850	6810	6810	9720	9060
122	5000	7000	7000	9990	9360
124	5140	7200	7200	10280	9675
127	5350	7490	7490	10710	10148
130	5570	7800	7800	11140	10635
132	5720	8000	8000	11420	10965
137	6080	8510	8510	12160	11810
142	6450	9030	9030	12910	12690
147	6840	9560	9560	13660	13600
152	7220	10100	10100	14430	14500
157	7600	10640	10640	15200	15520
162	7990	11180	11180	15980	16530

Testing Load of Studless Link Anchor Chain

Nominal Chain Diameter (mm)	BM1		BM2		Weight (kg/27.5m)
	Proof Test Load (KN)	Breaking Test Load (KN)	Proof Test Load (KN)	Breaking Test Load (KN)	
50	584	1294	844	1960	1430
48	838	1196	771	1810	1334
46	494	1098	698	1680	1212
44	452	1000	630	1540	1110
42	412	915	597	1400	1005
40	373	829	563	1280	957
38	337	749	501	1160	823
36	302	672	442	1050	742
34	270	600	386	937	660
32	239	531	335	833	589
30	211	468	311	735	523
28	183	407	286	642	460
26	158	351	241	556	401
24	135	299	210	476	344



Mooring Chain

Application: used to connect ship body and anchor

Type: Stud link chain / studless link chain

Grade: R3, R3S, R4, R4S, R5

Dia. Range: 50mm~225mm

Length: customized



Test Load of Mooring Chain

Chain Diameter	R3		R3s			R4		
	Stud, Studless Tension	Breaking Load	Studless Tension	Stud Tension	Breaking Load	Studless Tension	Stud Tension	Breaking Load
34	745	1065	831	859	1189	917	1031	1308
36	832	1189	928	960	1327	1024	1152	1461
38	923	1319	1030	1065	1473	1136	1278	1621
40	1019	1456	1136	1176	1626	1254	1411	1789
42	1119	1599	1248	1291	1786	1377	1549	1965
44	1223	1748	1364	1411	1952	1505	1693	2148
46	1331	1903	1485	1536	2124	1639	1843	2338
48	1444	2064	1610	1666	2304	1777	1999	2536
50	1560	2230	1740	1800	2490	1920	2160	2740
52	1681	2403	1875	1940	2683	2069	2327	2952
54	1806	2581	2014	2083	2882	2222	2500	3171
56	1934	2764	2157	2231	3086	2380	2677	3396
58	2066	2953	2304	2384	3297	2543	2860	3628
60	2202	3147	2456	2541	3514	2710	3049	3867
62	2342	3347	2612	2702	3737	2882	3242	4112
64	2485	3552	2771	2867	3966	3058	3440	4364
66	2632	3762	2935	3036	4200	3239	3644	4622
68	2782	3977	3103	3210	4440	3424	3852	4886
70	2936	4196	3274	3387	4686	3613	4065	5156
73	3173	4535	3539	3661	5064	3905	4393	5572
76	3417	4885	3812	3943	5454	4206	4731	6002
78	3584	5124	3998	4136	5721	4411	4963	6295

Chain Diameter	R3		R3s			R4		
	Stud, Studless Tension	Breaking Load	Studless Tension	Stud Tension	Breaking Load	Studless Tension	Stud Tension	Breaking Load
81	3841	5490	4284	4432	6130	4727	5318	6746
84	4104	5866	4578	4735	6550	5051	5682	7208
87	4374	6252	4879	5047	6981	5383	6056	7682
90	4651	6648	5187	5366	7423	5724	6439	8168
92	4838	6916	5397	5583	7723	5955	6699	8498
95	5125	7326	5717	5914	8180	6308	7096	9002
97	5320	7604	5934	6138	8491	6547	7366	9343
100	5616	8028	6264	6480	8964	6912	7776	9864
102	5817	8316	6489	6712	9285	7160	8055	10217
105	6123	8753	6830	7065	9774	7536	8478	10755
107	6330	9049	7061	7304	10104	7791	8765	11118
111	6751	9650	7530	7789	10775	8309	9347	11857
114	7072	10109	7888	8160	11288	8704	9792	12421
117	7398	10575	8251	8536	11808	9105	10243	12993
120	7728	11047	8620	8917	12335	9511	10700	13573
122	7951	11365	8868	9174	12690	9785	11008	13964
124	8175	11686	9118	9433	13048	10062	11319	14358
127	8515	12172	9498	9825	13591	10480	11790	14956
130	8859	12663	9881	10222	14140	10903	12266	15559
132	9090	12994	10139	10488	14509	11188	12586	15965
137	9674	13829	10791	11163	15442	11907	13395	16992
142	10268	14677	11452	11847	16389	12637	14217	18034
147	10869	15536	12123	12541	17348	13377	15049	19089
152	11476	16405	12800	13242	18318	14125	15890	20157
157	12090	17282	13485	13950	19297	14880	16740	21235
162	12708	18166	14175	14664	20284	15641	17596	22321

Mooring Rope

Material: PA multifilament, PA yarn, PP multifilament, PP, Polyester, PET/PP mixed, Aramid fiber

Strand: 3/8/12/16

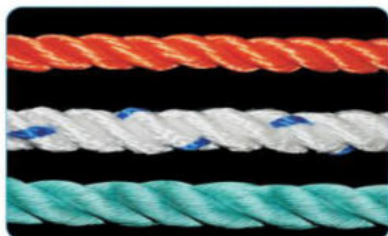
Type: twisted / braided

Dia: 4mm~160mm

Standard: ISO2307

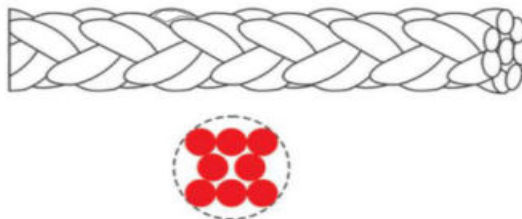


3 Strand Rope



Specification		PA multifilament		PA yarn		PP multifilament		Polypropylene		Polyester		PET/PP mixed	
Dia.	Cir.	Ktex	KN	Ktex	KN	Ktex	KN	Ktex	KN	Ktex	KN	Ktex	KN
4	1/2	10	3.7	10	2.6	6.3	2.3	6	2.1	12	2.9	7	2.8
6	3/4	22	7.9	22	6	18	6.5	17	5.9	27	5.6	17.5	6.8
8	1	40	13.8	40	10.9	32	11.4	30	10.4	48	10	31	11.9
10	1-1/4	62	21.2	62	15.7	47	16.8	45	15.3	76	15.6	48.5	18.2
12	1-1/2	89	30.1	89	24.1	68	23.9	65	21.7	110	22.3	69.9	25.7
14	1-3/4	121	40	121	33	95	32.9	90	29.9	148	31.2	95.1	34.7
16	2	158	51.9	158	42.5	121	40.7	115	37	195	39.8	124	44.8
18	2-1/4	200	64.3	200	53.9	155	51.9	148	47.2	245	49.8	157	56.1
20	2-1/2	247	79.2	247	66.7	189	62.6	180	56.9	303	62.3	194	68.7
22	2-3/4	299	94	299	80.4	231	75	220	68.2	367	74.7	235	82.1
24	3	355	112	355	96.3	273	87.7	260	79.7	437	89.6	279	96.3
26	3-1/4	417	129	417	111.5	320	101	305	92.2	512	105	328	113
28	3-1/2	484	149	484	127	373	115	355	105	594	120	380	130
30	3-3/4	555	169	555	143	425	132	405	120	682	134	437	148
32	4	632	192	632	161	483	146	460	132	778	154	497	167
36	4-1/2	800	240	800	200	614	182	585	166	982	190	629	210
40	5	987	294	987	241	756	221	720	201	1215	235	776	257
44	5-1/2	190	351	190	289	924	266	880	242	1468	275	939	308
48	6	1420	412	1420	338	1092	308	1040	280	1750	329	1110	364
52	6-1/2	1670	479	1670	393	1281	357	1220	325	2050	384	1320	424
56	7	1930	550	1930	450	1491	408	1420	371	2380	439	1520	489

8 Strand Rope

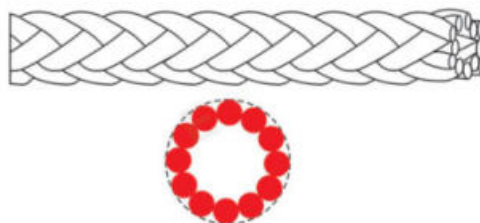


MOORING EQUIPMENT

Specification		PA multifilament		PA yarn		PP multifilament		Polypropylene		Polyester		PET/PP mixed	
Dia.	Cir.	Ktex	KN	Ktex	KN	Ktex	KN	Ktex	KN	Ktex	KN	Ktex	KN
20	2-1/2	247	79.2	247	66.7	189	62.6	180	56.9	303	62.3	194	68.7
24	3	355	112	355	96.3	273	87.7	260	79.7	437	89.6	279	96.3
28	3-1/2	484	149	484	127	373	115	355	105	594	120	380	130
32	4	632	192	632	161	483	146	460	132	778	154	497	167
36	4-1/2	800	240	800	200	614	182	585	166	982	190	629	210
40	5	987	294	987	241	756	221	720	201	1215	235	776	257
44	5-1/2	1190	351	1190	289	924	266	880	242	1468	279	939	308
48	6	1420	412	1420	338	1092	308	1040	280	1750	329	1110	364
52	6-1/2	1670	479	1670	393	1281	357	1220	325	2050	384	1320	424
56	7	1930	550	1930	450	1491	408	1420	371	2380	439	1520	489
60	7-1/2	2220	627	2220	513	1712	467	1630	424	2730	489	1750	558
64	8	2530	709	2530	579	1943	528	1850	480	3110	568	1990	631
72	9	3200	887	3200	723	2457	663	2340	603	3930	707	2520	789
80	10	3950	1080	3950	884	3045	815	2900	741	4850	867	3110	963
88	11	4780	1300	4780	1053	3686	978	3510	890	5870	1040	3750	1160
96	12	5690	1530	5690	1239	4379	1155	4170	1050	6990	1230	4470	1370
104	13	6670	1780	6670	1482	5145	1325	4900	1204	8200	1420	5260	1590
112	14	7740	2050	7740	1690	5985	1529	5700	1390	9500	1620	6050	1840
120	15	8880	2340	8880	1930	6825	1756	6500	1596	10900	1865	6980	2100
128	16	10100	2650	10100	2187	7770	1982	7400	1802	12400	2110	7950	2370
136	17	11400	2980	11400	2461	8820	2231	8400	2029	14000	2400	8950	2660
144	18	12800	3320	12800	2751	9870	2490	9400	2264	15700	2650	10100	2970
160	20	15800	4060	15800	3395	12100	3051	11521	2774	19400	3270	12500	3630



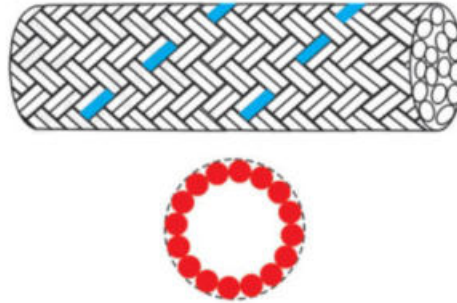
12 Strand Rope



Specification		PA multifilament		PA yarn		PP multifilament		Polypropylene		Polyester		PET/PP mixed	
Dia.	Cir.	Ktex	KN	Ktex	KN	Ktex	KN	Ktex	KN	Ktex	KN	Ktex	KN
20	2-1/2	247	81	247	70	189	64	180	58	303	64	194	70
24	3	355	114	355	101	273	89	260	81	437	91	279	98
28	3-1/2	484	152	484	133	373	118	355	107	594	122	380	133
32	4	632	196	632	169	483	148	460	135	778	157	497	170
36	4-1/2	800	245	800	210	614	186	585	169	982	194	629	214
40	5	987	300	987	253	756	226	720	205	1215	240	776	262
44	5-1/2	1190	358	1190	303	924	271	880	246	1468	285	939	314
48	6	1420	420	1420	355	1092	315	1040	286	1750	336	1110	371
52	6-1/2	1670	489	1670	413	1281	364	1220	331	2050	392	1320	432
56	7	1930	561	1930	473	1491	416	1420	378	2380	448	1520	499
60	7-1/2	2220	640	2220	539	1712	476	1630	433	2730	499	1750	569
64	8	2530	723	2530	608	1943	539	1850	490	3110	579	1990	644
72	9	3200	905	3200	759	2457	676	2340	615	3930	721	2520	805
80	10	3950	1102	3950	928	3045	832	2900	756	4850	884	3110	982
88	11	4780	1326	4780	1106	3686	998	3510	907	5870	1061	3750	1183
96	12	5690	1561	5690	1301	4379	1178	4170	1071	6990	1255	4470	1397
104	13	6670	1816	6670	1556	5145	1351	4900	1228	8200	1448	5260	1622
112	14	7740	2091	7740	1775	5985	1560	5700	1418	9500	1652	6050	1877
120	15	8880	2387	8880	2027	6825	1791	6500	1628	10900	1902	6980	2142
128	16	10100	2703	10100	2296	7770	2022	7400	1838	12400	2152	7950	2417
136	17	11400	3040	11400	2584	8820	2276	8400	2069	14000	2448	8950	2713
144	18	12800	3386	12800	2889	9870	2540	9400	2309	15700	2703	10100	3029
160	20	15800	4141	15800	3565	12097	3112	11521	2829	19400	3335	12500	3703



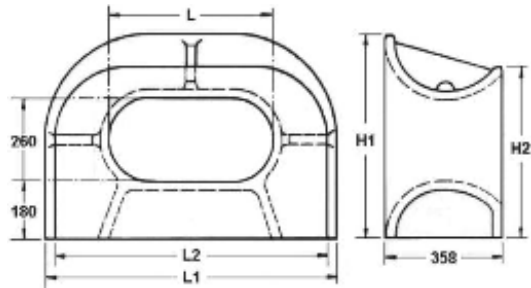
16 Strand Rope



Specification		PA multifilament		PA yarn		PP multifilament		Polyester	
Dia.	Cir.	Ktex	KN	Ktex	KN	Ktex	KN	Ktex	KN
20	2-1/2	247	87	247	73	189	69	303	76
24	3	355	123	355	106	273	96	473	108
28	3-1/2	484	164	484	140	373	127	590	143
32	4	632	211	632	177	483	160	795	184
36	4-1/2	800	264	800	220	614	201	1000	231
40	5	987	323	987	265	756	243	1227	283
44	5-1/2	1190	386	1190	318	924	292	1477	339
48	6	1420	453	1420	372	1092	339	1750	400
52	6-1/2	1670	527	1670	432	1281	393	2020	466
56	7	1930	605	1930	495	1491	449	2386	538
60	7-1/2	2220	690	2220	564	1712	513	2730	614
64	8	2530	780	2530	637	1943	581	3090	694
72	9	3200	976	3200	795	2457	729	3910	868
80	10	3950	1188	3950	972	3045	897	4820	1059

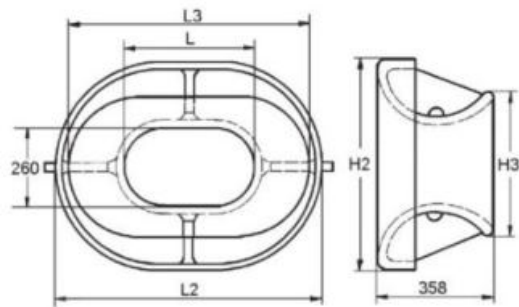


JIS F2017 Type AC (Deck Mounted)



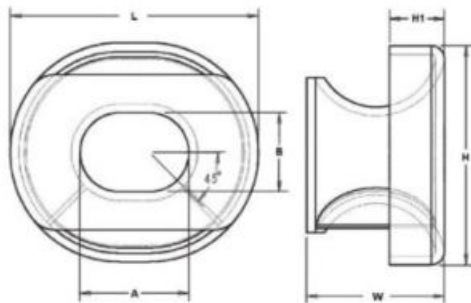
Nominal Size	Dimensions(mm)					Mass (kg)
	L	L1	L2	H1	H2	
310	310	708	652	639	541	253
360	360	760	704	640	542	289
400	400	804	750	642	545	323
450	450	856	802	643	547	351
500	500	980	854	644	549	395

JIS F2017 Type BC (Bulwark Mounted)



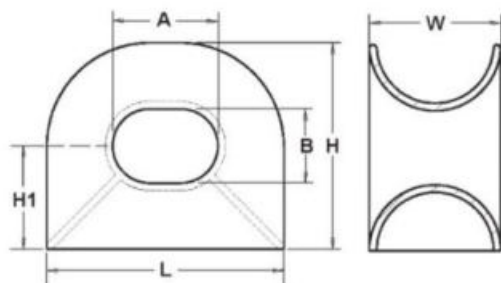
Nominal Size	Dimensions(mm)					Mass (kg)
	L	L2	L3	H2	H3	
310	310	734	652	684	462	476
360	360	788	704	688	464	305
400	400	832	750	692	470	344
450	450	886	802	696	474	385
500	500	940	854	700	478	422

Chock DIN81915 Type A (Bulwark Mounted)



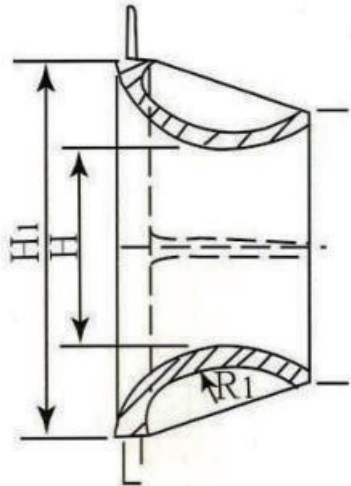
Model	SWL (kN)	Dimensions(mm)						Mass (kg)
		L	W	H	H1	A	B	
A2	20	360	200	315	70	160	115	30
A3	30	450	250	390	75	200	140	50
A5	50	550	300	480	80	250	180	85
A8	80	680	360	585	90	320	225	140
A12	125	840	440	710	110	400	270	210
A20	200	1020	520	840	130	500	320	320
A32	320	1300	700	1100	150	600	400	800

Chock DIN81915 Type C (Deck Mounted)



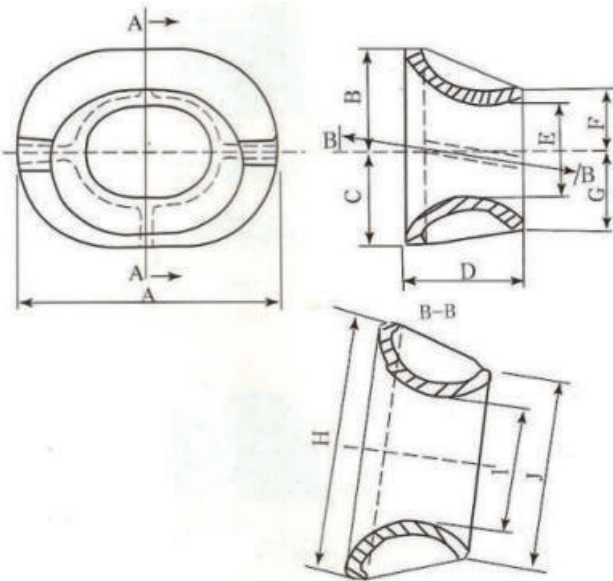
Model	SWL (kN)	Dimensions(mm)						Mass (kg)
		L	W	H	H1	A	B	
C2	20	360	200	315	158	160	115	29
C3	30	450	250	390	195	200	140	48
C5	50	550	300	480	240	250	180	85
C8	80	680	360	585	293	320	225	136
C12	125	840	440	710	355	400	270	211
C20	200	1020	520	840	420	500	320	356
C32	320	1300	700	1100	550	600	400	840

JIS F2030-1978 Single Point Mooring Pipes Model A



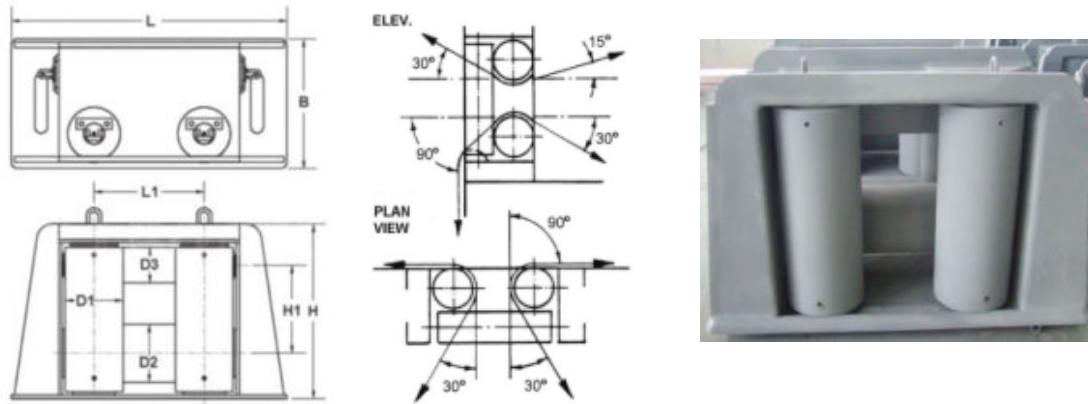
Nominal Size	L	L1	H	H1	B	C	Nominal Weight(kg)
400	400	780	300	680	350	65	210
500	500	940	400	840	400	70	340
600	600	1100	450	950	450	75	490
700	700	1260	500	1060	500	80	600
800	800	1420	600	1220	550	85	880

JIS F2030-1978 Single Point Mooring Pipes Model B



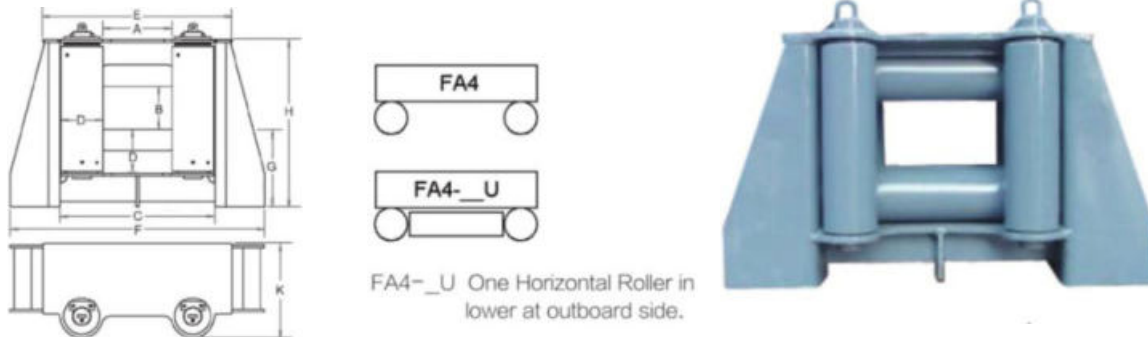
Nominal Size	A	B	C	D	E	H	I	Nominal Weight(kg)
400	800	320	300	350	300	800	400	190
500	960	370	350	400	400	960	500	310
600	1120	420	400	450	450	1120	600	460
700	1280	470	450	500	500	1280	700	660
800	1440	520	550	550	600	1440	800	830

Horizontal Fairlead Roller JIS F2026 Type A 4 Rollers



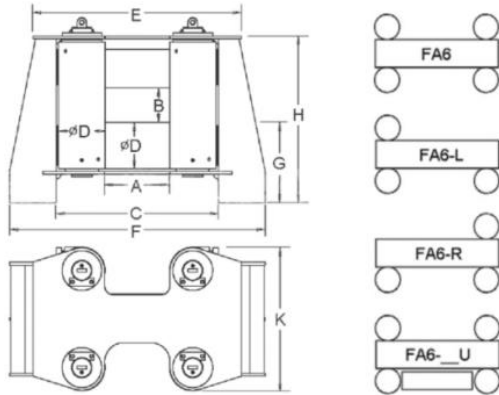
Nominal Dia.	Dimensions(mm)								Open Size	Wire Rope Dia.	SWL(ton)	Mass(kg)
	B	D1	D2	D3	H	H1	L	L1				
140	365	140	140	114	542	275	805	335	148x195	18	12	214
160	405	165	165	114	584	290	890	365	149x197	22.4	17	307
180	455	190	190	140	636	315	960	390	148x196	25	24	411
200	505	216	216	140	680	330	1049	420	150x226	28	28	568
250	610	267	267	165	824	415	1303	520	194x247	35	46	1000
315	715	318	318	216	998	420	1562	620	260x295	42	60	1624

Universal Fairlead Roller - 4 Rollers



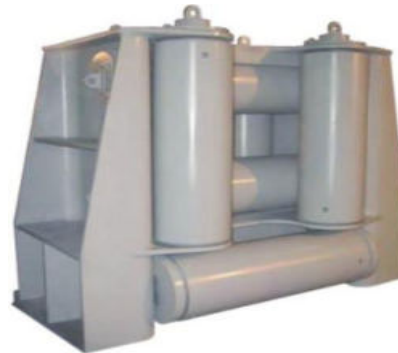
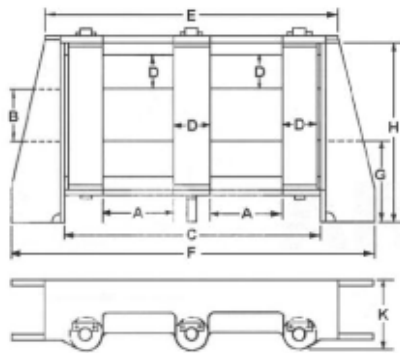
Type	Rope Dia. (mm)	Dimensions(mm)									Mass (kg)
		A	B	C	D	E	F	G	H	K	
FA4-12	12	180	100	356	80	446	650	160	370	170	75
FA4-16	16	230	130	446	100	546	785	200	480	210	120
FA4-20	20	250	130	506	120	714	900	250	520	250	180
FA4-24	24	280	160	576	140	716	1000	260	590	288	330
FA4-32	32	300	200	700	190	916	1185	340	752	415	580
FA4-40	40	400	250	900	245	1100	1479	450	970	548	1180
FA4-48	48	400	250	1018	300	1214	1700	470	1048	618	2210
FA4-56	56	400	250	1116	350	1336	1900	580	1216	710	2980
FA4-64	64	500	300	1360	420	1620	2300	720	1475	854	3680

Universal Fairlead Roller - 6 Rollers



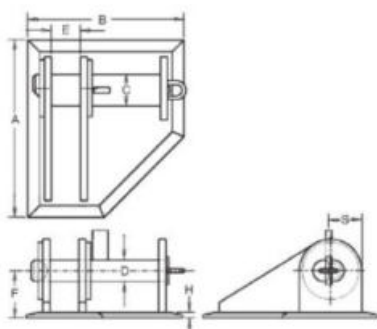
Type	Rope Dia. (mm)	Dimensions(mm)									Mass(kg)	
		A	B	C	D	E	F	G	H	K	KG1	KG2
FA6-12	12	180	100	356	80	446	650	160	370	255	85	95
FA6-16	16	230	130	446	100	546	800	200	480	315	145	165
FA6-20	20	250	130	506	120	626	900	250	520	375	255	290
FA6-24	24	280	160	576	140	716	1000	260	590	432	390	440
FA6-32	32	300	160	676	180	836	1200	340	752	549	700	920
FA6-40	40	320	180	830	245	1030	1350	450	970	750	1300	1550
FA6-48	48	400	250	1018	300	1214	1700	470	1048	930	1700	2100
FA6-64	64	500	300	1360	420	1620	2298	720	1475	1280	3600	3800

Universal Fairlead Roller - 7 Rollers



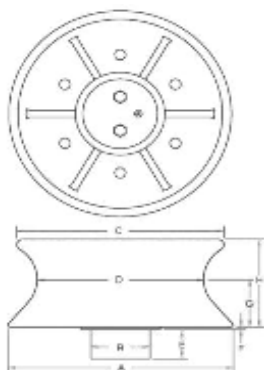
Type	Rope Dia. (mm)	Dimensions(mm)									Mass(kg)
		A	B	C	D	E	F	G	H	K	
FB7-12	12	180	100	620	80	710	914	160	370	170	185
FB7-16	16	230	130	778	100	878	1120	200	480	210	245
FB7-20	20	250	130	878	120	1086	1272	250	520	250	370
FB7-24	24	280	160	996	140	1236	1420	260	590	288	505
FB7-32	32	300	200	1190	180	1410	1678	340	752	366	940
FB7-40	40	320	250	1548	245	1760	2126	450	970	500	1600
FB7-48	48	400	250	1720	300	1920	2400	470	1048	608	3600

Smit Bracket



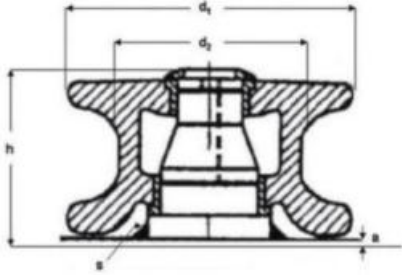
Nominal Dia.(mm)	Dimensions(mm)								Mass (Kgs)	SWL (kN)	MBL (kN)
	A	B	C	D	E	F	H	S			
54	720	650	115	75	100	205	30	118	195	1000	2000
76	900	800	160	110	150	240	30	170	390	2000	4000
84	1018	905	170	120	160	273	35	210	560	2500	5000
95	1120	940	195	135	170	290	40	276	760	3000	6570

Warping Roller - DIN81906



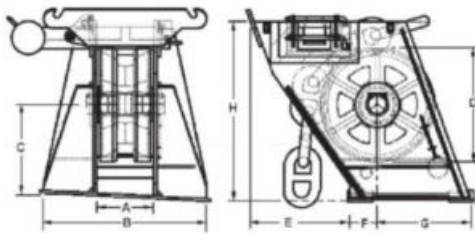
Nominal Dia. (mm)	Rope Dia. (mm)	Dimensions(mm)								Mass (Kgs)	Rated Towing Pull (KN)	Breaking Strength of Wire (KN)
		A	B	C	D	E	F	G	H			
160	12	210	60	195	160	50	5	42	80	10	10	90
200	16	265	70	245	200	50	5	56	102	19	20	150
250	20	330	85	300	250	50	6	71	126	36	30	220
320	24	420	106	390	320	50	4	88	160	76	50	350
400	32	530	125	490	400	60	8	113	208	146	80	500
450	40	610	160	560	450	85	8	139	256	238	120	800
500	48	640	190	620	500	100	8	144	278	328	200	1150
560	52	780	230	740	560	150	8	183	348	551	320	1750

Guide Roller NS2585



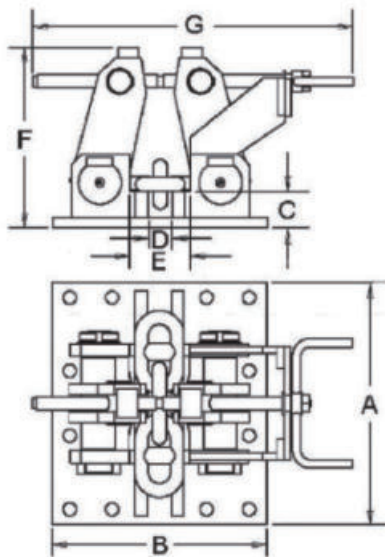
Nominal Dia. (mm)	A	D1	D2	H	S	Weight(kg)	Breaking Load(Mp)
150	5	240	150	154	15	25	15.5
200	5	310	200	186	15	50	19.5
250	6	380	250	230	18	92	28
300	7	440	300	255	18	127	33
350	7	500	350	271	18	169	44
400	7	560	400	307	15	253	57
450	7	360	450	316	15	310	63

Chain Cable Stopper - Roller Type



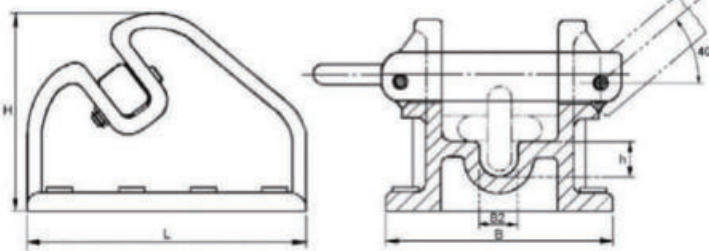
Rope Dia. (mm)	Dimensions(mm)								Mass(Kgs)
	A	B	C	D	E	F	G	H	
20-26	150	350	275	270	125	200	375	475	165
28-34	200	450	350	270	235	240	425	550	200
36-44	250	560	340	444	275	270	520	600	380
46-52	300	640	635	530	235	325	680	750	650
54-58	330	740	515	620	320	380	800	900	1080
60-64	360	780	565	670	385	400	900	1000	1750
66-73	420	900	610	750	390	470	950	1100	2100
76-84	470	1000	680	870	430	520	980	1200	2850
87-95	530	1100	760	1000	520	610	1100	1350	3900
97-104	575	1225	880	1100	525	650	1250	1450	4900
107-114	640	1400	930	1250	620	720	1400	1650	4950
117-124	680	1450	1000	1350	720	780	1500	1750	5100
127-132	700	1500	1100	1450	810	820	1650	1920	5600

Chain Cable Stopper - Screw Type



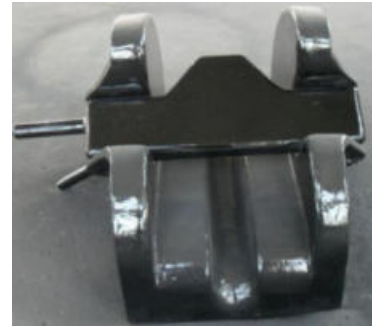
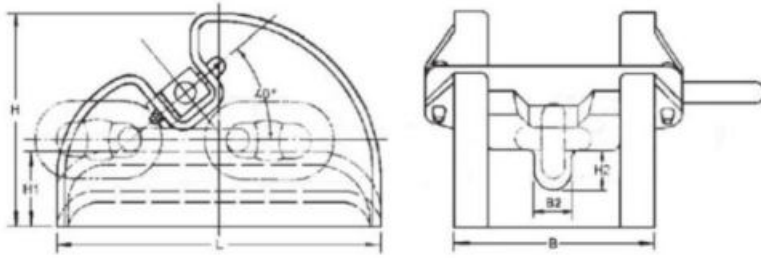
Rope Dia. of Chain (mm)	Dimensions(mm)							Pull Load(KN)	
	A	B	C	D	E	F	G	Grade2	Grade3
20-26	500	450	78	50	130	400	680	312	445
28-32	560	500	85	55	414	420	746	466	666
34-36	640	520	90	62	162	504	802	586	840
38-40	640	530	95	65	173	508	802	717	1024
42-44	700	600	104	72	192	512	900	864	1232
46-48	760	680	115	78	210	517	1000	1016	1448
50-52	820	760	128	86	230	540	1080	1180	1689
54-56	960	820	142	90	242	640	1180	1358	1943
58-60	1040	860	162	96	254	668	1220	1546	2213
62-64	1100	900	180	102	264	692	1320	1746	1497

Chain Cable Stopper - JIS F2002 Bar Type



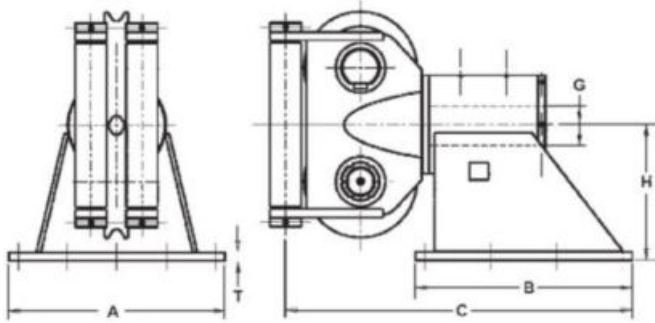
Nominal Chain Dia (mm)	Dimensions (mm)					Mass (kg)
	B	H	L	h	B2	
17-19	195	190	270	32	32	22
20-22	215	216	310	37	38	31
23-25	240	241	345	43	43	44
26-28	265	270	385	48	49	58
30-32	305	305	435	54	55	89
34-36	340	342	490	61	61	122
38-40	370	378	540	68	65	160
42-44	405	412	590	75	72	208
46-48	440	450	640	82	78	272
50-52	470	491	695	88	85	338
54-56	495	522	745	95	92	414
58-60	530	564	795	102	98	505
62-64	565	600	850	109	104	618
66-68	590	635	900	116	110	737

Chain Cable Stopper - JIS F2015 Cast Steel Bar Type



Nominal Dia.of Chain (mm)	Dimensions(mm)						Mass (Kgs)
	B	B2	H	H1	H2	L	
38-40	336	65	378	130	68	540	110
42-44	366	72	412	142	75	590	138
46-48	397	78	450	155	82	640	177
48-52	428	85	491	170	88	695	214
54-56	457	92	528	182	95	745	261
58-60	488	98	465	195	102	795	319
62-64	517	104	600	208	109	850	396
66-68	547	110	635	220	116	900	482
70-73	582	117	675	233	125	960	609
76-78	617	123	715	245	133	1020	740

Double Sheave Fairleader Model FA-38



Wire Rope Dia.		Sheave Dia(mm)	Dimensions(mm)						Mass (kg)
mm	inch		A	B	C	T	H	G	
25	1	254	486	420	722	20	277	70	210
32	1-1/4	305	570	492	839	20	342	104	365
38	1-1/2	406	780	782	1266	30	489	143	850
44	1-3/4	508	1064	914	1467	40	546	150	1520
50	2	610	1219	1067	1763	40	648	186	2600
64	2-1/2	762	1372	1219	2045	50	800	230	4000
76	3	938	1800	1500	2634	50	960	300	7200
82	1-3/4	1020	1800	2000	3187	50	1100	320	10800

Marine Shark Jaw

Capacity: 100t~750t



Towing Hook

Type: quick release hook, pelican hook, buoy hook

Driven Method: manual, pneumatic, hydraulic

 <p>Quick Release Pelican Hook</p>	 <p>Quick Release Disc Type Towing Hook</p>	 <p>Buoy Type Quick Release Hook</p>	 <p>Pneumatic Quick Release Towing Hook</p>
 <p>Dock Quick Release Towing Hook</p>	 <p>Springless Towing Hook</p>	 <p>Triple Quick Release Mooring Hook</p>	 <p>Spring Towing Hook</p>

Rubber Fender

Rubber fenders are primarily used as “bumpers” to absorb collision energy during contact between the vessel and docks (or even other vessels) in the maritime industry. Rubber fenders are also installed on docks. The primary objective of the rubber fenders on the dock is to absorb collision energy during the berthing process.

Common Types of Rubber Fender:



Pneumatic Rubber Fender



Super Cell Type Rubber Fender



Cone Type Rubber Fender



Super Arch Type Rubber Fender



Cylindrical Type Rubber Fender



Tug Rubber Fender



D Type Rubber Fender



Roller Type Rubber Fender



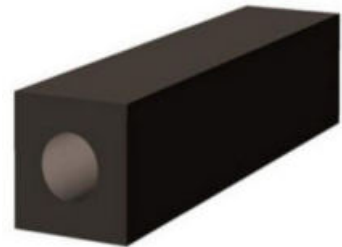
π Type Rubber Fender



W Type Rubber Fender



Rectangle Type Rubber Fender



Square Rubber Fender



Fender for Dock Corner



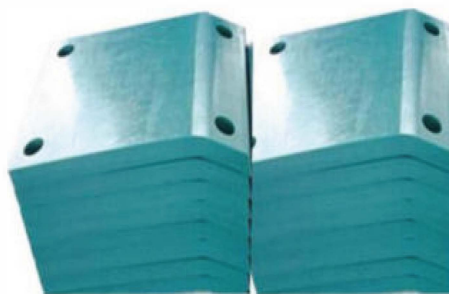
Foam-Filled Rubber Fender



A Series PVC Fender



F Series PVC Fender



UHMW-PE Pad

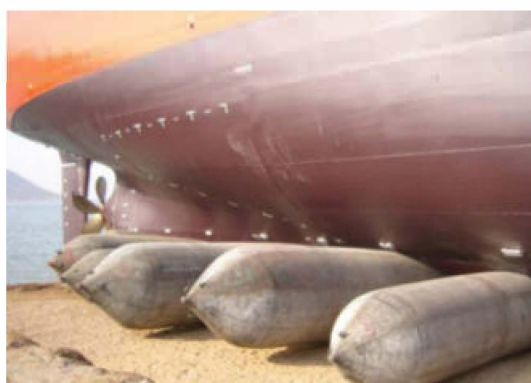


Accessories for Rubber Fender

Marine Airbag

Marine airbags mainly used for ship launching, lifting and refloating. Based on different applications, we can divided airbags to four types:

- Ship Launching Airbag
- Marine Salvage Airbag
- Heavy Lifting Airbag
- Caisson Moving Airbag



Marine Buoy



Mooring Buoy



Anchor Buoy



Aquaculture Buoy